

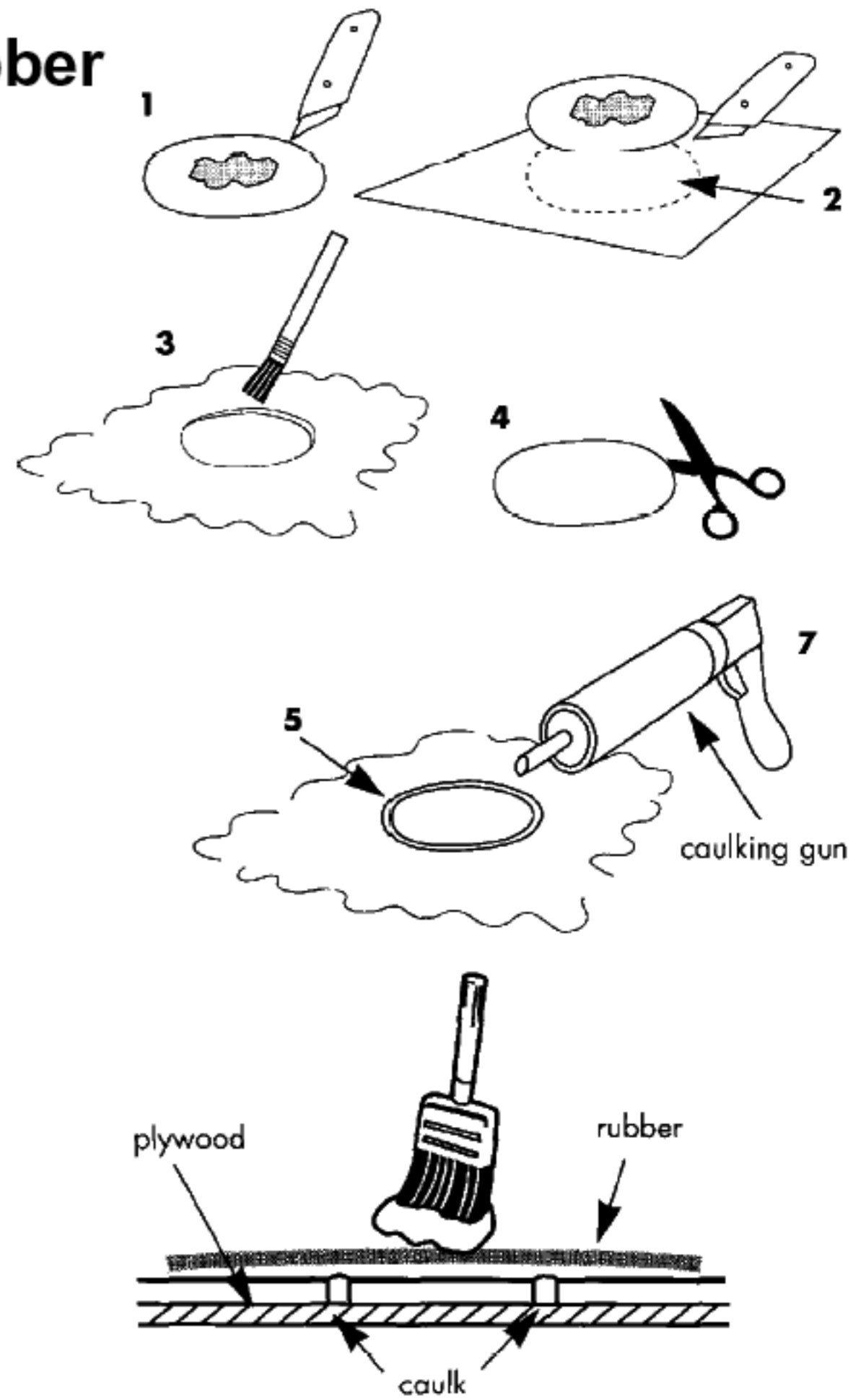
Roof Repairs with



To Repair Rips & Tears on Sheet Rubber

Make a round or oval cut around damage and remove piece.

2. Use removed piece as a pattern to cut a replacement patch from new rubber.
3. Re-glue any loose edges where damaged piece was removed using contact cement.
4. Use scissors to trim approx 1/16" from edge of new patch from 2.
5. Glue trimmed new patch into cut-out using contact cement. A gap will remain between patch and existing rubber.
6. Clean new patch plus 4 inches around it by wiping area with paint thinner, xylene or lacquer thinner.
7. Fill gap with Urethane or Acrylic caulk. Apply a raised bead to allow for shrinkage. Let caulk cure overnight.
8. Brush apply one coat of LIQUID ROOF over patch and 2 inches beyond. Repair may be reinforced with polyester fabric if desired.



The above procedure results in a low profile. Seamless repair with identical weathering properties of original roof.

Time needed	1-2 hours depending on size of damage
Liquid Roof	part quart