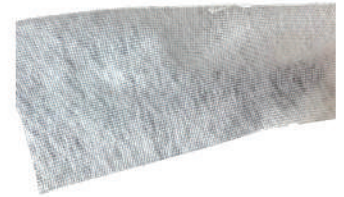




FB-180 POLYESTER KM-MESH



FB-180 POLYESTER KM-MESH

FB-180 series polyester km-mesh is a stitchbonded material that is ideally suited for use with Butyl Liquid Rubber. The parallel fiber structure allows Butyl Liquid Rubber to quickly wet-out and totally saturate. These properties ensure a true monolithic membrane which remains intact even under thermal shock conditions.

TYPE OF APPLICATIONS:

- Reinforcement of seams, cracks and penetrations on:
 - Various roofing surfaces
 - Concrete, stucco and brick
 - Concrete
 - Wood joints and cracks

Butyl Liquid Rubber FB-180 provides high tensile strength with good elongation for excellent thermal stress force properties. When used with Butyl Liquid Rubber, they provide flexible, reinforced repairs.

Butyl Liquid Rubber FB-180 are soft flexible polyesters that will readily conform to corrugated metal and many other irregular surfaces. This makes them easier to handle and apply properly than other products.

Butyl Liquid Rubber FB-180 polyester km-mesh is compatible with both solvent-based and water-based coatings.

AVERAGE TYPICAL PROPERTIES

Weight	3-oz/sq yd
Tensile	57.1 lbs
Elongation	61.65%
Mullen Burst	176.8 lbs
Trapezoid	16.1 lbs

AVAILABLE SIZE

2" x 180'

The specifications, properties and performance of materials described herein are based on information believed to be reliable. Unless otherwise expressly provided in written contract, the products discussed are sold without conditions or warranties, expressed or implied. Product specifications are subject to change without notice.



Butyl Liquid Rubber
494 Bridgeport Ave Suite 101-342 Shelton CT 06484